

1°外部特征:(见图纸)

Geometry:See drawing

SCO.01.0006

2°初始技术特性:(试验前)

Primary Technical Properties:(before test)

电压等级: Tension and limits:		90V/20	150V/20	230V/20	300V/20	350V/20
直流导通电压: DC Spark-over Voltage:	100V/s	72V-108V	120V-180V	184V-276V	240V-360V	280V-420V
冲击导通电压: Impulse Spark-over Voltage:	1kV/μs	≤640V	≤700V	≤700V	≤900V	≤900V
绝缘电阻: Insulation Resistance:	≤90V ≥90V 50V DC 100V DC	≥10GΩ	≥10GΩ	≥10GΩ	≥10GΩ	≥10GΩ
极间电容: Capacitance:	1MHz	≤0.3pF	≤0.3pF	≤0.3pF	≤0.3pF	≤0.3pF
过保护电压: Holdover Voltage:	RC//:150Ω- 100nF;RS=330Ω	≥60V	≥80V	≥80V	≥80V	≥80V
辉光压降: Glow Voltage:		≤100V	≤100V	≤100V	≤100V	≤100V
弧光压降: Arc Voltage:		≤25V	≤25V	≤25V	≤25V	≤25V

3°耐流特性:(试验后满足)

Power-flow Properties:(after life test)

直流导通电压: DC Spark-over Voltage:		72V-108V	120V-180V	184V-276V	240V-360V	280V-420V
冲击导通电压: Impulse Spark-over Voltage:		≤640V	≤700V	≤700V	≤900V	≤900V
绝缘电阻: Insulation Resistance:		≥1000MΩ	≥1000MΩ	≥1000MΩ	≥1000MΩ	≥1000MΩ
交流耐流: AC discharge current:	50/60Hz,600V 5times,1s interval 3min	10A	10A	10A	10A	10A
冲击耐流波形: Impulse discharge current:	8/20μs +5/-5,interval 3min	10KA	10KA	10KA	10KA	10KA
冲击耐流波形: Impulse discharge current:	8/20μs 1time	25KA	25KA	25KA	25KA	25KA
冲击耐流波形: Impulse discharge current:	10/350μs 1time	2KA	2KA	2KA	2KA	2KA
冲击耐流寿命: Impulse life:	10/1000μs 300times,interval 2min	50A	50A	50A	50A	50A

4°产品编码:

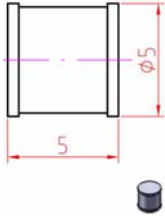
Code:

	9298001	9298002	9298057	9298013	9298015
QVGQ2.E184939	YES	YES	YES	YES	YES
REG.-Nr.40008209					

注:本产品符合2002/95/EC directive(ROHS);所有试验条件均满足ITU-T K.12要求。

Note:This product is 2002/95/EC directive(ROHS);all test are ITU-T K.12 compliant.

总经理 GM	总经理助理 GDTM	销售部 SD	质量部 QD	技术工程部 TD	生产部 PD	日期 Date	编码 N° Code N°
						2009-4-20	92 980 XX XX



1°外部特征:(见图纸)

SCO.01.0006

Geometry:See drawing

2°初始技术特性:(试验前)

Primary Technical Properties:(before test)

电压等级: Tension and limits:		550V/20	600V/-15+20
直流导通电压: DC Spark-over Voltage:	100V/s	440V-660V	510V-720V
冲击导通电压: Impulse Spark-over Voltage:	1kV/μs	≤1200V	≤1200V
绝缘电阻: Insulation Resistance:	≤90V ≥90V 50V DC 100V DC	≥10GΩ	≥10GΩ
极间电容: Capacitance:	1MHz	≤0.3pF	≤0.3pF
过保护电压: Holdover Voltage:	RC//:150Ω- 100nF;RS=330Ω	≥80V	≥80V
辉光压降: Glow Voltage:		≤100V	≤100V
弧光压降: Arc Voltage:		≤25V	≤25V

3°耐流特性:(试验后满足)

Power-flow Properties:(after life test)

直流导通电压: DC Spark-over Voltage:		440V-660V	510V-720V
冲击导通电压: Impulse Spark-over Voltage:		≤1200V	≤1200V
绝缘电阻: Insulation Resistance:		≥1000MΩ	≥1000MΩ
交流耐流: AC discharge current:	50/60Hz,600V 5times,1s interval 3min	10A	10A
冲击耐流波形: Impulse discharge current:	8/20μs +5/-5,interval 3min	10KA	10KA
冲击耐流波形: Impulse discharge current:	8/20μs 1time	25KA	25KA
冲击耐流波形: Impulse discharge current:	10/350μs 1time	2KA	2KA
冲击耐流寿命: Impulse life:	10/1000μs 300times,interval 2min	50A	50A

4°产品编码:

Code:

9298025 9298026



QVGQ2.E184939



REG.-Nr.40008209

注:本产品符合2002/95/EC directive(ROHS);所有试验条件均满足ITU-T K.12要求。

Note:This product is 2002/95/EC directive(ROHS);all test are ITU-T K.12 compliant.

总经理 GM	总经理助理 GDTM	销售部 SD	质量部 QD	技术工程部 TD	生产部 PD	日期 Date	编码 N° Code N°
						2009-4-20	92 980 XX XX